

ASTM A182 FLANGES ANSI B16.5 INDEX

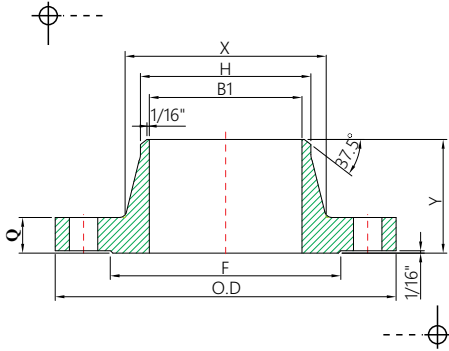
CLASS 150 STAINLESS STEEL FLANGES ANSI B16.5 -----	39
CLASS 150 STAINLESS STEEL FLANGES ANSI B16.5 -----	40
CLASS 300 STAINLESS STEEL FLANGES ANSI B16.5 -----	41
CLASS 300 STAINLESS STEEL FLANGES ANSI B16.5 -----	42
CLASS 600 STAINLESS STEEL FLANGES ANSI B16.5 -----	43
CLASS 600 STAINLESS STEEL FLANGES ANSI B16.5 -----	44
CLASS 900 STAINLESS STEEL FLANGES ANSI B16.5 -----	45
CLASS 900 STAINLESS STEEL FLANGES ANSI B16.5 -----	46
CLASS 1500 STAINLESS STEEL FLANGES ANSI B16.5 -----	47
CLASS 1500 STAINLESS STEEL FLANGES ANSI B16.5 -----	48
CLASS 2500 STAINLESS STEEL ALANGES ANSI B16.5 -----	49
CLASS 2500 STAINLESS STEEL FLANGES ANSI B16.5 -----	50



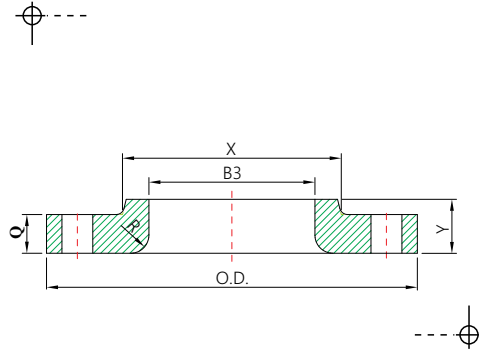
ASTM A182 FLANGES ANSI B16.5

CLASS 150 STAINLESS STEEL FLANGES ANSI B16.5

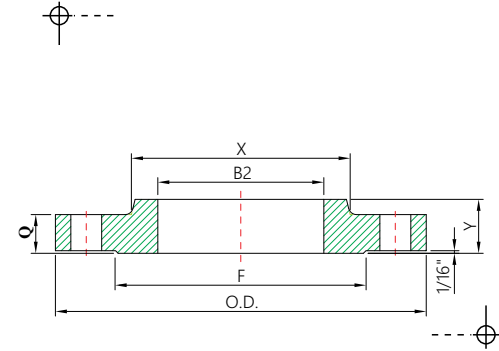
WELDING NECK



LAP JOINT



SLIP-ON



DIMENSIONS

unit : inch

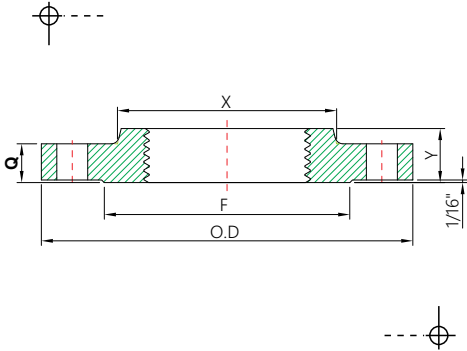
NOM. PIPE SIZE	FLANGE DIAMETER (O.D.)	FLANGE THICKNESS (Q) MIN. (1)	HUB DIA. AT BASE (X)	RAISED FACE DIA. (F)	HUB DIA. AT WELDING POINT (H)	BORE DIAMETER (B)			COUNTER BORE OF THREADED FLANGE (C)	DEPTH OF SOCKET (D)	LENGTH THROUGH HUB (Y)		
						(B1) WELDING NECK AND SOCKET WELD (2)	(B2) SLIP-ON AND SOCKET WELD MIN.	(B3) LAP JOINT MIN.			WELDING NECK	SLIP-ON SOCKET WELD AND THREADED	LAP JOINT
1/2	3.50	0.44	1.19	1.38	0.84	0.62	0.88	0.90	NO COUNTER BORE REQUIRED ON 150# THREADED FLANGES	0.38	1.88	0.62	0.62
3/4	3.88	0.50	1.50	1.69	1.05	0.82	1.09	1.11		0.44	2.06	0.62	0.62
1	4.25	0.56	1.94	2.00	1.32	1.05	1.36	1.38		0.50	2.19	0.69	0.69
1 1/4	4.62	0.62	2.31	2.50	1.66	1.38	1.70	1.72		0.56	2.25	0.81	0.81
1 1/2	5.00	0.69	2.56	2.88	1.90	1.61	1.95	1.97		0.62	2.44	0.88	0.88
2	6.00	0.75	3.06	3.62	2.38	2.07	2.44	2.46		0.69	2.50	1.00	1.00
2 1/2	7.00	0.88	3.56	4.12	2.88	2.47	2.94	2.97		0.75	2.75	1.12	1.12
3	7.50	0.94	4.25	5.00	3.50	3.07	3.57	3.60		0.81	2.75	1.19	1.19
3 1/2	8.50	0.94	4.81	5.50	4.00	3.55	4.07	4.10		0.88	2.81	1.25	1.25
4	9.00	0.94	5.31	6.19	4.50	4.03	4.57	4.60		0.94	3.00	1.31	1.31
5	10.00	0.94	6.44	7.31	5.56	5.05	5.66	5.69		0.94	3.50	1.44	1.44
6	11.00	1.00	7.56	8.50	6.63	6.07	6.72	6.75		1.06	3.50	1.56	1.56
8	13.50	1.12	9.69	10.62	8.63	7.98	8.72	8.75		1.25	4.00	1.75	1.75
10	16.00	1.19	12.00	12.75	10.75	10.02	10.88	10.92		1.31	4.00	1.94	1.94
12	19.00	1.25	14.38	15.00	12.75	12.00	12.88	12.92		1.56	4.50	2.19	2.19
14	21.00	1.38	15.75	16.25	14.00	13.25	14.14	14.18		1.63	5.00	2.25	3.12
16	23.50	1.14	18.00	18.50	16.00	15.25	16.16	16.19		1.75	5.00	2.50	3.44
18	25.00	1.56	19.88	21.00	18.00	17.25	18.18	18.20		1.94	5.50	2.69	3.81
20	27.50	1.69	22.00	23.00	20.00	19.25	20.20	20.25		2.12	5.69	2.88	4.06
24	32.00	1.88	26.12	27.25	24.00	23.25	24.25	24.25		2.50	6.00	3.25	4.38



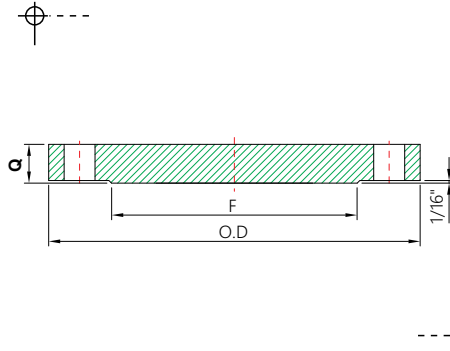
ASTM A182 FLANGES ANSI B16.5

CLASS 150 STAINLESS STEEL FLANGES ANSI B16.5

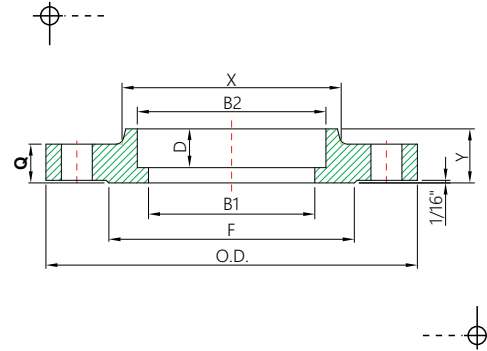
THREADED



BLIND



SOCKET WELD



DIMENSIONS

unit : inch

NOM. PIPE SIZE	MIN. THREAD LENGTH	RADIUS (R) LAP JOINT	DRILLING			BOLTING				
			DIAMETER OF BOLT CIRCLE	NO. OF HOLES	DIA. OF HOLES	DIA. OF BOLTS	MACHINE BOLT LENGTH		STUD BOLT LENGTH	
							Raised Face .06"	Ring Joint	Raised Face .06"	Ring Joint
1/2	0.62	0.12	2.38	4	0.62	1/2	2.00	2.50	-	
3/4	0.62	0.12	2.75	4	0.62	1/2	2.25	2.50	-	
1	0.69	0.12	3.12	4	0.62	1/2	2.25	2.75	3.25	
1 1/4	0.81	0.19	3.50	4	0.62	1/2	2.50	2.75	3.25	
1 1/2	0.88	0.25	3.88	4	0.62	1/2	2.50	3.00	3.50	
2	1.00	0.31	4.75	4	0.75	5/8	2.75	3.25	3.75	
2 1/2	1.12	0.31	5.50	4	0.75	5/8	3.00	3.50	4.00	
3	1.19	0.38	6.00	4	0.75	5/8	3.25	3.75	4.25	
3 1/2	1.25	0.38	7.00	8	0.75	5/8	3.25	3.75	4.25	
4	1.31	0.44	7.50	8	0.75	5/8	3.25	3.75	4.25	
5	1.44	0.50	8.50	8	0.88	3/4	3.25	4.00	4.50	
6	1.56	0.50	9.50	8	0.88	3/4	3.50	4.00	4.50	
8	1.75	0.50	11.75	8	0.88	3/4	3.75	4.25	4.75	
10	1.94	0.50	14.25	12	1.00	7/8	4.00	4.75	5.25	
12	2.19	0.50	17.00	12	1.00	7/8	4.25	4.75	5.25	
14	2.25	0.50	18.75	12	1.12	1	4.50	5.25	5.75	
16	2.50	0.50	21.25	16	1.12	1	4.75	5.50	6.00	
18	2.69	0.50	22.75	16	1.25	1 1/8	5.00	6.00	6.50	
20	2.88	0.50	25.00	20	1.25	1 1/8	5.50	6.25	6.75	
24	3.25	0.50	29.50	20	1.38	1 1/4	6.00	7.00	7.50	

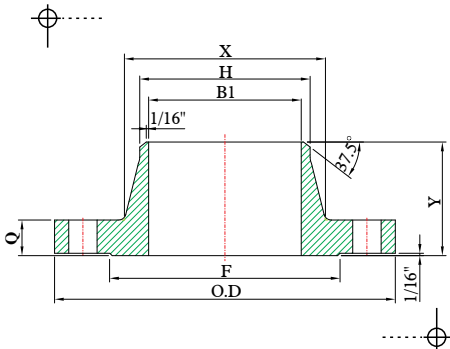
NOM. PIPE SIZE	APPROXIMATE WEIGHT EACH —POUNDS±			
	WELDING NECK	SLIP-ON SOCKET WELD AND THREADED	LAP JOINT	BLIND
1/2	1.25	1.00	1.00	1.25
3/4	2.00	1.50	1.50	1.50
1	2.50	2.00	2.00	2.00
1 1/4	3.00	3.00	3.00	3.00
1 1/2	4.50	3.00	3.50	4.00
2	6.00	5.25	5.00	6.50
2 1/2	10.00	8.00	7.00	9.50
3	12.00	9.00	9.25	12.50
3 1/2	12.00	11.00	11.00	13.00
4	16.50	12.50	12.50	17.00
5	19.00	15.00	15.00	20.00
6	25.00	19.00	19.00	26.50
8	39.00	30.00	30.00	45.00
10	52.00	43.00	43.00	70.00
12	80.00	64.00	64.00	110.00
14	110.00	90.00	105.00	140.00
16	140.00	98.00	140.00	180.00
18	150.00	130.00	160.00	220.00
20	180.00	165.00	195.00	285.00
24	260.00	220.00	275.00	430.00



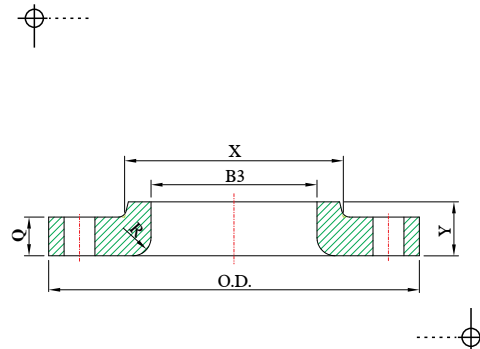
ASTM A182 FLANGES ANSI B16.5

CLASS 300 STAINLESS STEEL FLANGES ANSI B16.5

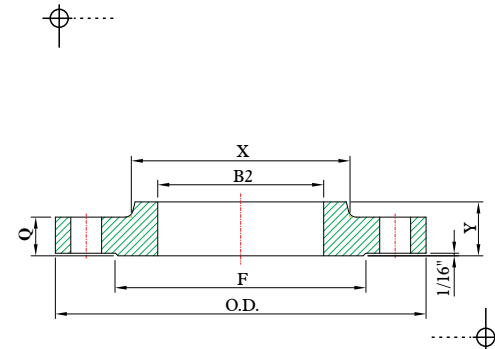
WELDING NECK



LAP JOINT



SLIP-ON



DIMENSIONS

unit : inch

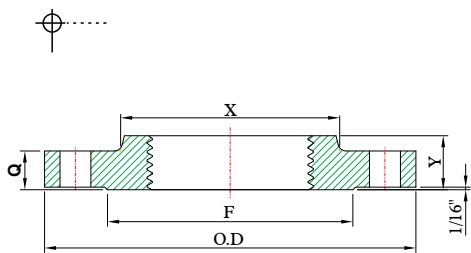
NOM. PIPE SIZE	FLANGE DIAMETER (O.D.)	FLANGE THICKNESS (Q) MIN. (1)	HUB DIA. AT BASE (X)	RAISED FACE DIA. (F)	HUB DIA. AT WELDING POINT (H)	BORE DIAMETER (B)			COUNTER BORE OF THREADED FLANGE (C) MIN.	DEPTH OF SOCKET (D)	LENGTH THROUGH HUB (Y)		
						(B1) WELDING NECK AND SOCKET WELD (2)	(B2) SLIP-ON AND SOCKET WELD MIN.	(B3) LAP JOINT MIN.			WELDING NECK	SLIP-ON SOCKET WELD AND THREADED	LAP JOINT
1/2	3.75	0.56	1.50	1.38	0.84	0.62	0.88	0.90	0.93	0.38	2.06	0.88	0.88
3/4	4.62	0.62	1.88	1.69	1.05	0.82	1.09	1.11	1.14	0.44	2.25	1.00	1.00
1	4.88	0.69	2.12	2.00	1.32	1.05	1.36	1.38	1.41	0.50	2.44	1.06	1.06
1 1/4	5.25	0.75	2.50	2.50	1.66	1.38	1.70	1.72	1.75	0.56	2.56	1.06	1.06
1 1/2	6.12	0.81	2.75	2.88	1.90	1.61	1.95	1.97	1.99	0.62	2.69	1.19	1.19
2	6.50	0.88	3.31	3.62	2.38	2.07	2.44	2.46	2.50	0.69	2.75	1.31	1.31
2 1/2	7.50	1.00	3.94	4.12	2.88	2.47	2.94	2.97	3.00	0.75	3.00	1.50	1.50
3	8.25	1.12	4.62	5.00	3.50	3.07	3.57	3.60	3.63	0.81	3.12	1.69	1.69
3 1/2	9.00	1.19	5.25	5.50	4.00	3.55	4.07	4.10	4.13	-	3.19	1.75	1.75
4	10.00	1.25	5.75	6.19	4.50	4.03	4.57	4.60	4.63	-	3.38	1.88	1.88
5	11.00	1.38	7.00	7.31	5.56	5.05	5.66	5.69	5.69	-	3.88	2.00	2.00
6	12.50	1.44	8.12	8.50	6.63	6.07	6.72	6.75	6.75	-	3.88	2.06	2.06
8	15.00	1.62	10.25	10.62	8.63	7.98	8.72	8.75	8.75	-	4.38	2.44	2.44
10	17.50	1.88	12.62	12.75	10.75	10.02	10.88	10.92	10.88	-	4.62	2.62	3.75
12	20.50	2.00	14.75	15.00	12.75	12.00	12.88	12.92	12.94	-	5.12	2.88	4.00
14	23.00	2.12	16.75	16.25	14.00	13.25	14.14	14.18	14.19	-	5.62	3.00	4.38
16	25.50	2.25	19.00	18.50	16.00	15.25	16.16	16.19	16.19	-	5.75	3.25	4.75
18	28.00	2.38	21.00	21.00	18.00	17.25	18.18	18.20	18.19	-	6.25	3.50	5.12
20	30.50	2.50	23.12	23.00	20.00	19.25	20.20	20.25	20.19	-	6.38	3.75	5.50
24	36.00	2.75	27.62	27.25	24.00	23.25	24.25	24.25	24.19	-	6.62	4.19	6.00



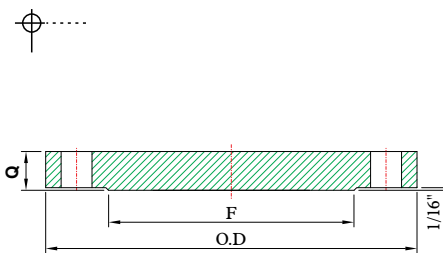
ASTM A182 FLANGES ANSI B16.5

CLASS 300 STAINLESS STEEL FLANGES ANSI B16.5

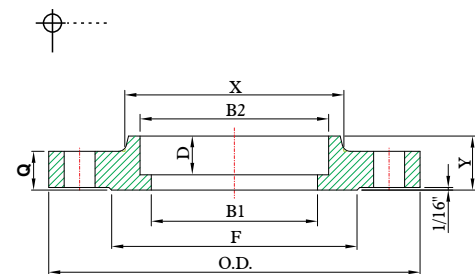
THREADED



BLIND



SOCKET WELD



DIMENSIONS

unit : inch

NOM. PIPE SIZE	MIN. THREAD LENGTH	RADIUS (R) LAP JOINT	DRILLING			BOLTING			
			DIAMETER OF BOLT CIRCLE	NO. OF HOLES	DIA. OF HOLES	DIA. OF BOLTS	STUD BOLT LENGTH		
							MACHINE BOLT LENGTH	Ring Joint	
Raised Face .06"	Raised Face .06"								
1/2	0.62	0.12	2.62	4	0.62	1/2	2.25	2.75	3.00
3/4	0.62	0.12	3.25	4	0.75	5/8	2.50	3.00	3.50
1	0.69	0.12	3.50	4	0.75	5/8	2.75	3.25	3.75
1 1/4	0.81	0.19	3.88	4	0.75	5/8	2.75	3.25	3.75
1 1/2	0.88	0.25	4.50	4	0.88	3/4	3.00	3.75	4.25
2	1.00	0.31	5.00	8	0.75	5/8	3.00	3.50	4.25
2 1/2	1.12	0.31	5.88	8	0.88	3/4	3.50	4.00	4.75
3	1.19	0.38	6.62	8	0.88	3/4	3.75	4.25	5.00
3 1/2	1.25	0.38	7.25	8	0.88	3/4	3.75	4.50	5.25
4	1.31	0.44	7.88	8	0.88	5/8	4.00	4.50	5.25
5	1.44	0.50	9.25	8	0.88	3/4	4.25	4.75	5.50
6	1.56	0.50	10.62	12	0.75	3/4	4.25	5.00	5.75
8	1.75	0.50	13.00	12	0.88	7/8	4.75	5.50	6.25
10	1.94	0.50	15.25	16	1.00	1	5.50	6.25	7.00
12	2.19	0.50	17.25	16	1.00	1 1/8	6.00	6.75	7.50
14	2.25	0.50	20.25	20	1.12	1 1/8	6.25	7.00	7.75
16	2.50	0.50	22.50	20	1.12	1 1/4	6.50	7.50	8.25
18	2.69	0.50	24.75	24	1.25	1 1/4	6.75	7.75	8.50
20	2.88	0.50	27.00	24	1.25	1 1/4	7.25	8.25	9.00
24	3.25	0.50	32.00	24	1.38	1 1/2	8.00	9.25	10.25

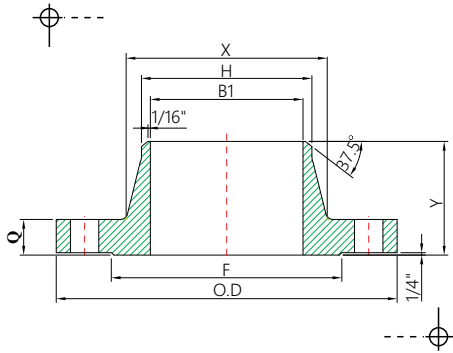
NOM. PIPE SIZE	APPROXIMATE WEIGHT EACH— POUNDS ±			
	WELDING NECK	SLIP-ON. SOCKET WELD AND THREADED	LAP JOINT	BLIND
1/2	2	2	2	2
3/4	3	3	3	3
1	4	3	3	3
1 1/4	5	4	4	4
1 1/2	7	6	6	6
2	9	7	7	8
2 1/2	12	10	10	12
3	15	13	13	16
3 1/2	18	17	17	21
4	25	22	22	27
5	32	28	28	35
6	42	39	39	50
8	67	58	58	81
10	91	81	91	125
12	140	115	140	185
14	180	165	190	250
16	250	190	250	295
18	320	250	295	395
20	400	315	370	505
24	580	475	550	790



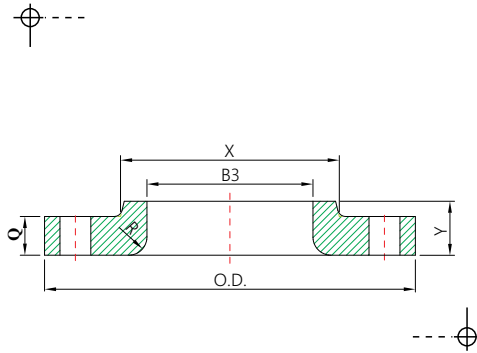
ASTM A182 FLANGES ANSI B16.5

CLASS 600 STAINLESS STEEL FLANGES ANSI B16.5

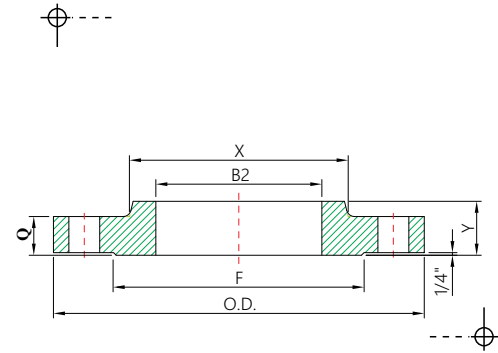
WELDING NECK



LAP JOINT



SLIP-ON



DIMENSIONS

unit : inch

NOM. PIPE SIZE	FLANGE DIAMETER (O.D.)	FLANGE THICKNESS (Q) MIN. (1)	HUB DIA. AT BASE (X)	RAISED FACE DIA. (F)	HUB DIA. AT WELDING POINT (H)	BORE DIAMETER (B)			COUNTER BORE OF THREADED FLANGE (C) MIN.	DEPTH OF SOCKET (D)	LENGTH THROUGH HUB (Y)		
						(B1) WELDING NECK AND SOCKET WELD (2)	(B2) SLIP-ON AND SOCKET WELD MIN.	(B3) LAP JOINT MIN.			WELDING NECK	SLIP-ON SOCKET WELD AND THREADED	LAP JOINT
1/2	3.75	0.56	1.50	1.38	0.84		0.88	0.90	0.93	0.38	2.06	0.88	0.88
3/4	4.62	0.62	1.88	1.69	1.05		1.09	1.11	1.14	0.44	2.25	1.00	1.00
1	4.88	0.69	2.12	2.00	1.32		1.36	1.38	1.41	0.50	2.44	1.06	1.06
1 1/4	5.25	0.81	2.50	2.50	1.66		1.70	1.72	1.75	0.56	2.62	1.12	1.12
1 1/2	6.12	0.88	2.75	2.88	1.90		1.95	1.97	1.99	0.62	2.75	1.25	1.25
2	6.50	1.00	3.31	3.62	2.38		2.44	2.46	2.50	0.69	2.88	1.44	1.44
2 1/2	7.50	1.12	3.94	4.12	2.88		2.94	2.97	3.00	0.75	3.12	1.62	1.62
3	8.25	1.25	4.62	5.00	3.50		3.57	3.60	3.63	0.81	3.25	1.81	1.81
3 1/2	9.00	1.38	5.25	5.50	4.00		4.07	4.10	4.13	-	3.38	1.94	1.94
4	10.75	1.50	6.00	6.19	4.50		4.57	4.60	4.63	-	4.00	2.12	2.12
5	13.00	1.75	7.44	7.31	5.56		5.66	5.69	5.69	-	4.50	2.38	2.38
6	14.00	1.88	8.75	8.50	6.63		6.72	6.75	6.75	-	4.62	2.62	2.62
8	16.50	2.19	10.75	10.62	8.63		8.72	8.75	8.75	-	5.25	3.00	3.00
10	20.00	2.50	13.50	12.75	10.75		10.88	10.92	10.88	-	6.00	3.38	4.38
12	22.00	2.62	15.75	15.00	12.75		12.88	12.92	12.94	-	6.12	3.62	4.62
14	23.75	2.75	17.00	16.25	14.00		14.14	14.18	14.19	-	6.50	3.69	5.00
16	27.00	3.00	19.50	18.50	16.00		16.16	16.19	16.19	-	7.00	4.19	5.50
18	29.25	3.25	21.50	21.00	18.00		18.18	18.20	18.19	-	7.25	4.62	6.00
20	32.00	3.50	24.00	23.00	20.00		20.20	20.25	20.19	-	7.50	5.00	6.50
24	37.00	4.00	28.25	27.25	24.00		24.25	24.25	24.19	-	8.00	5.50	7.25

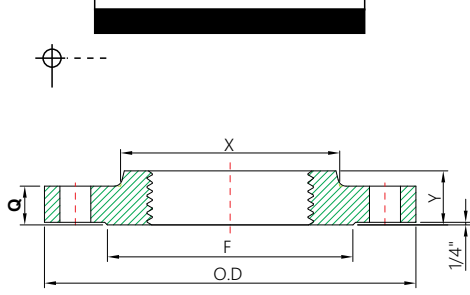
TO BE SPECIFIED BY PURCHASER



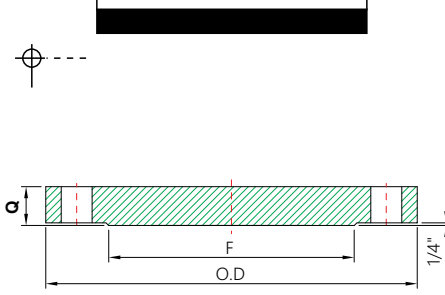
ASTM A182 FLANGES ANSI B16.5

CLASS 600 STAINLESS STEEL FLANGES ANSI B16.5

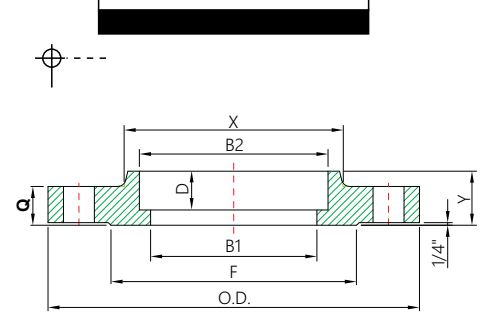
THREADED



BLIND



SOCKET WELD



DIMENSIONS

unit : inch

NOM. PIPE SIZE	MIN. THREAD LENGTH	RADIUS (R) LAP JOINT	DRILLING			BOLTING			
			DIAMETER OF BOLT CIRCLE	NO. OF HOLES	DIA. OF HOLES	DIA. OF BOLTS	MACHINE BOLT LENGTH	STUD BOLT LENGTH	
								Raised Face .06"	Raised Face .06"
1/2	0.62	0.12	2.62	4	0.62	1/2	3.25	3.00	3.00
3/4	0.62	0.12	3.25	4	0.75	5/8	3.50	3.25	3.50
1	0.69	0.12	3.50	4	0.75	5/8	3.75	3.50	3.75
1 1/4	0.81	0.19	3.88	4	0.75	5/8	4.00	3.75	4.00
1 1/2	0.88	0.25	4.50	4	0.88	3/4	4.25	4.00	4.25
2	1.12	0.31	5.00	8	0.75	5/8	4.25	4.00	4.50
2 1/2	1.25	0.31	5.88	8	0.88	3/4	4.75	4.50	5.00
3	1.38	0.38	6.62	8	0.88	3/4	5.00	4.75	5.25
3 1/2	1.56	0.38	7.25	8	1.00	7/8	5.50	5.25	5.75
4	1.62	0.44	8.50	8	1.00	7/8	5.75	5.50	6.00
5	1.88	0.44	10.50	8	1.12	1	6.50	6.25	6.75
6	2.00	0.50	11.50	12	1.12	1	6.75	6.50	7.00
8	2.25	0.50	13.75	12	1.25	1 1/8	7.75	7.50	7.75
10	2.56	0.50	17.00	16	1.38	1 1/4	8.50	8.25	8.75
12	2.75	0.50	19.25	20	1.38	1 1/4	8.75	8.50	9.00
14	2.88	0.50	20.75	20	1.50	1 3/8	9.25	9.00	9.50
16	3.06	0.50	23.75	20	1.62	1 1/2	10.00	9.75	10.25
18	3.12	0.50	25.75	20	1.75	1 5/8	10.75	10.50	11.00
20	3.25	0.50	28.50	24	1.75	1 5/8	11.50	11.25	11.75
24	3.62	0.50	33.00	24	2.00	1 7/8	13.00	12.75	13.25

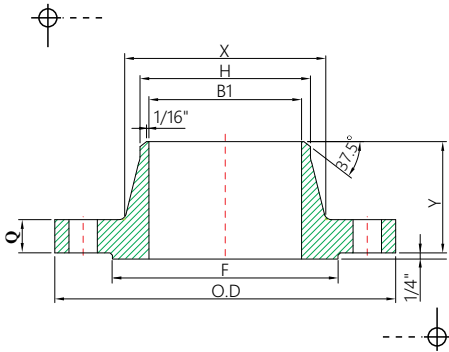
NOM. PIPE SIZE	APPROXIMATE WEIGHT EACH - POUNDS ±			
	WELDING NECK	SLIP-ON SOCKET WELD AND THREADED	LAP JOINT	BLIND
1/2	2	2	2	2
3/4	4	3	3	3
1	4	4	4	4
1 1/4	6	5	5	5
1 1/2	8	7	7	8
2	12	9	9	10
2 1/2	18	13	12	15
3	23	16	15	20
3 1/2	26	21	20	29
4	42	37	36	41
5	68	63	61	68
6	81	80	78	86
8	120	115	110	140
10	190	170	170	230
12	225	200	200	295
14	280	230	250	355
16	390	330	365	495
18	475	400	435	630
20	590	510	570	810
24	830	730	810	1250



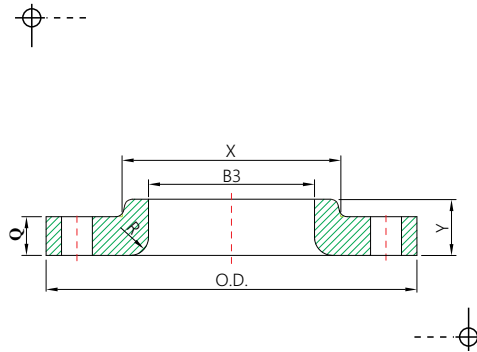
ASTM A182 FLANGES ANSI B16.5

CLASS 900 STAINLESS STEEL FLANGES ANSI B16.5

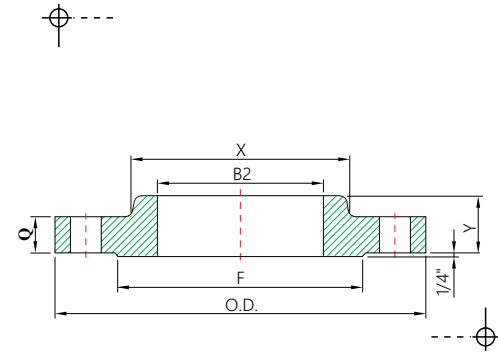
WELDING NECK



LAP JOINT



SLIP-ON



DIMENSIONS

unit : inch

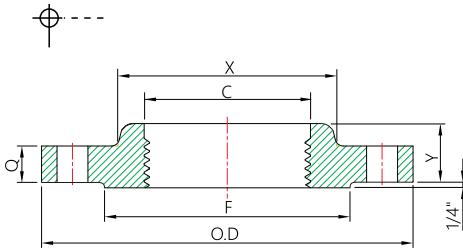
NOM. PIPE SIZE	FLANGE DIAMETER (O.D.)	FLANGE THICKNESS (Q) MIN. (1)	HUB DIA. AT BASE (X)	RAISED FACE DIA. (F)	HUB DIA. AT WELDING POINT (H)	BORE DIAMETER (B)			COUNTER BORE OF THREADED FLANGE (C) MIN.	LENGTH THROUGH HUB (Y)		
						(B1) WELDING NECK (2)	(B2) SLIP-ON MIN.	(B3) LAP JOINT MIN.		WELDING NECK	SLIP-ON AND THREADED	LAP JOINT
1/2	4.75	0.88	1.50	1.38	0.84	TO BE SPECIFIED BY PURCHASER	0.88	0.90	0.93	2.38	1.25	1.25
3/4	5.12	1.00	1.75	1.69	1.05		1.09	1.11	1.14	2.75	1.38	1.38
1	5.88	1.12	2.06	2.00	1.32		1.36	1.38	1.41	2.88	1.62	1.62
1 1/4	6.25	1.12	2.50	2.50	1.66		1.70	1.72	1.75	2.88	1.62	1.62
1 1/2	7.00	1.25	2.75	2.88	1.90		1.95	1.97	1.99	3.25	1.75	1.75
2	8.50	1.50	4.12	3.62	2.38		2.44	2.46	2.50	4.00	2.25	2.25
2 1/2	9.62	1.62	4.88	4.12	2.88		2.94	2.97	3.00	4.12	2.50	2.50
3	9.50	1.50	5.00	5.00	3.50		3.57	3.60	3.63	4.00	2.12	2.12
4	11.50	1.75	6.25	6.19	4.50		4.57	4.60	4.63	4.50	2.75	2.75
5	13.75	2.00	7.50	7.31	5.56		5.66	5.69	5.69	5.00	3.12	3.12
6	15.00	2.19	9.25	8.50	6.63		6.72	6.75	6.75	5.50	3.38	3.38
8	18.50	2.50	11.75	10.62	8.63		8.72	8.75	8.75	6.38	4.00	4.50
10	21.50	2.75	14.50	12.75	10.75		10.88	10.92	10.88	7.25	4.25	5.00
12	24.00	3.12	16.50	15.00	12.75		12.88	12.92	12.94	7.88	4.62	5.62
14	25.25	3.38	17.75	16.25	14.00		14.14	14.18	14.19	8.38	5.12	6.12
16	27.75	3.50	20.00	18.50	16.00		16.16	16.19	16.19	8.50	5.25	6.50
18	31.00	4.00	22.25	21.00	18.00		18.18	18.20	18.19	9.00	6.00	7.50
20	33.75	4.25	24.50	23.00	20.00		20.20	20.25	20.19	9.75	6.25	8.25
24	41.00	5.50	29.50	27.25	24.00		24.25	24.25	24.19	11.50	8.00	10.50



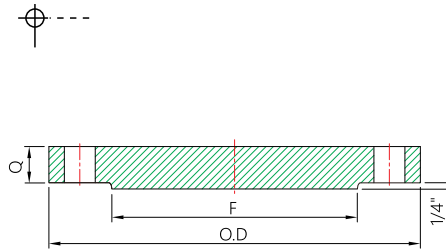
ASTM A182 FLANGES ANSI B16.5

CLASS 900 STAINLESS STEEL FLANGES ANSI B16.5

THREADED



BLIND



SOCKET WELD

SOCKET WELD
IS NOT PRODUCED
IN CLASS 900

DIMENSIONS

unit : inch

NOM. PIPE SIZE	MIN. THREAD LENGTH	RADIUS (R) LAP JOINT	DRILLING			BOLTING			
			DIAMETER OF BOLT CIRCLE	NO. OF HOLES	DIA. OF HOLES	DIA. OF BOLTS	STUD BOLT LENGTH		
							.25" Raised Face	Male & Female Tongue & Groove	Ring Joint
1/2	0.88	0.12	3.25	4	0.88	3/4	4.25	4.00	4.25
3/4	1.00	0.12	3.50	4	0.88	3/4	4.50	4.25	4.50
1	1.12	0.12	4.00	4	1.00	7/8	5.00	4.75	5.00
1 1/4	1.19	0.19	4.38	4	1.00	7/8	5.00	4.75	5.00
1 1/2	1.25	0.25	4.88	4	1.12	1	5.50	5.25	5.50
2	1.50	0.31	6.50	8	1.00	7/8	5.75	5.50	5.75
2 1/2	1.88	0.31	7.50	8	1.12	1	6.25	6.00	6.25
3	1.62	0.38	7.50	8	1.00	7/8	5.75	5.50	6.00
4	1.88	0.44	9.25	8	1.25	1 1/8	6.75	6.50	7.00
5	2.12	0.44	11.00	8	1.38	1 1/4	7.50	7.25	7.75
6	2.25	0.50	12.50	12	1.25	1 1/8	7.75	7.50	7.75
8	2.50	0.50	15.50	12	1.50	1 3/8	8.75	8.50	9.00
10	2.81	0.50	18.50	16	1.50	1 3/8	9.25	9.00	9.50
12	3.00	0.50	21.00	20	1.50	1 3/8	10.00	9.75	10.25
14	3.25	0.50	22.00	20	1.62	1 1/2	10.75	10.50	11.25
16	3.38	0.50	24.25	20	1.75	1 5/8	11.25	11.00	11.75
18	3.50	0.50	27.00	20	2.00	1 1/8	12.75	12.50	13.50
20	3.62	0.50	29.50	20	2.12	2	13.50	13.50	14.25
24	4.00	0.50	35.50	20	2.62	2 1/2	17.25	17.00	17.75

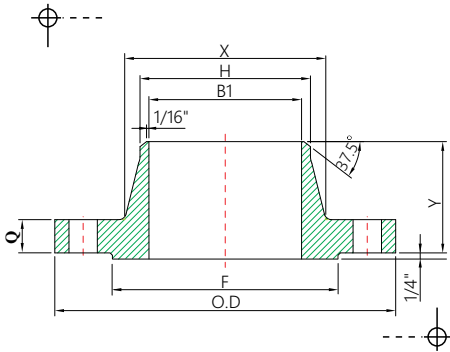
NOM. PIPE SIZE	APPROXIMATE WEIGHT EACH — POUNDS‡			
	WELDING NECK	SLIP-ON AND THREADED	LAP JOINT	BLIND
1/2	5	4	4	4
3/4	6	5	5	6
1	9	8	8	8
1 1/4	10	9	9	9
1 1/2	13	12	12	13
2	25	25	25	25
2 1/2	31	26	25	35
3	36	36	35	29
4	51	53	51	54
5	86	83	81	87
6	110	110	105	115
8	175	170	190	200
10	260	245	275	290
12	325	325	370	415
14	400	400	415	520
16	495	425	465	600
18	680	600	650	850
20	830	730	810	1075
24	1500	1400	1550	2025



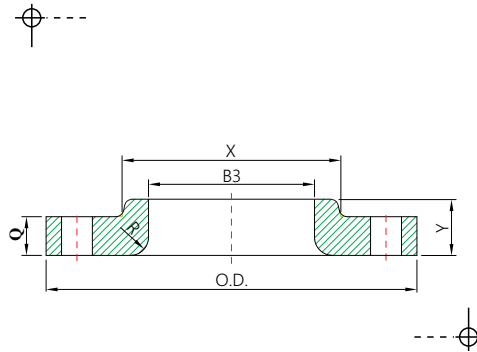
ASTM A182 FLANGES ANSI B16.5

CLASS 1500 STAINLESS STEEL FLANGES ANSI B16.5

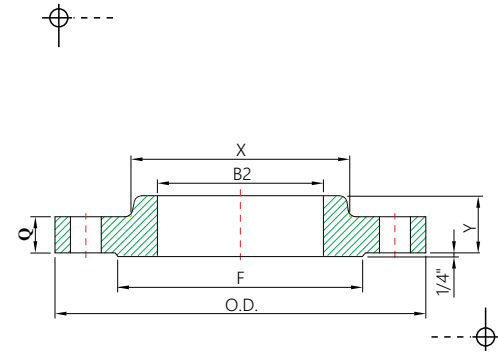
WELDING NECK



LAP JOINT



SLIP-ON



DIMENSIONS

unit : inch

NOM. PIPE SIZE	FLANGE DIAMETER (O.D.)	FLANGE THICKNESS (Q) MIN. (1)	HUB DIA. AT BASE (X)	RAISED FACE DIA. (F)	HUB DIA. AT WELDING POINT (H)	BORE DIAMETER (B)			COUNTER BORE OF THREADED FLANGE (C)	DEPTH OF SOCKET (D)	LENGTH THROUGH HUB (Y)		
						(B1) WELDING NECK AND SOCKET WELD (2)	(B2) SLIP-ON AND SOCKET WELD MIN.	(B3) LAP JOINT MIN.			WELDING NECK	SLIP-ON SOCKET WELD AND THREADED	LAP JOINT
1/2	4.75	0.88	1.50	1.38	0.84	0.88	0.90	0.93	0.38	2.38	1.25	1.25	
3/4	5.12	1.00	1.75	1.69	1.05	1.09	1.11	1.14	0.44	2.75	1.38	1.38	
1	5.88	1.12	2.06	2.00	1.32	1.36	1.38	1.41	0.50	2.88	1.62	1.62	
1 1/4	6.25	1.12	2.50	2.50	1.66	1.70	1.72	1.75	0.56	2.88	1.62	1.62	
1 1/2	7.00	1.25	2.75	2.88	1.90	1.95	1.97	1.99	0.62	3.25	1.75	1.75	
2	8.50	1.50	4.12	3.62	2.38	2.44	2.46	2.50	0.69	4.00	2.25	2.25	
2 1/2	9.62	1.62	4.88	4.12	2.88	2.94	2.97	3.00	0.75	4.12	2.50	2.50	
3	10.50	1.88	5.25	5.00	3.50	—	3.60	3.63	—	4.62	2.88	2.88	
4	12.25	2.12	6.38	6.19	4.50	—	4.60	4.63	—	4.88	3.56	3.56	
5	14.75	2.88	7.75	7.31	5.56	—	5.69	5.69	—	6.12	4.12	4.12	
6	15.50	3.25	9.00	8.50	6.63	—	6.75	6.75	—	6.75	4.69	4.69	
8	19.00	3.62	11.50	10.62	8.63	—	8.75	8.75	—	8.38	5.62	5.62	
10	23.00	4.25	14.50	12.75	10.75	—	10.92	10.88	—	10.00	6.25	7.00	
12	26.50	4.88	17.75	15.00	12.75	—	12.92	12.94	—	11.12	7.12	8.62	
14	29.50	5.25	19.50	16.25	14.00	—	14.18	14.19	—	11.75	—	9.50	
16	32.50	5.75	21.75	18.50	16.00	—	16.19	16.19	—	12.25	—	10.25	
18	36.00	6.38	23.50	21.00	18.00	—	18.20	18.19	—	12.88	—	10.88	
20	38.75	7.00	25.25	23.00	20.00	—	20.25	20.19	—	14.00	—	11.50	
24	46.00	8.00	30.00	27.25	24.00	—	24.25	24.19	—	16.00	—	13.00	

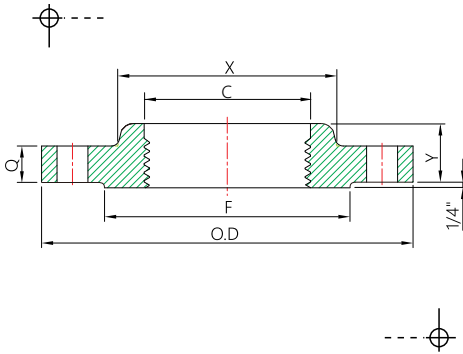
TO BE SPECIFIED BY PURCHASER



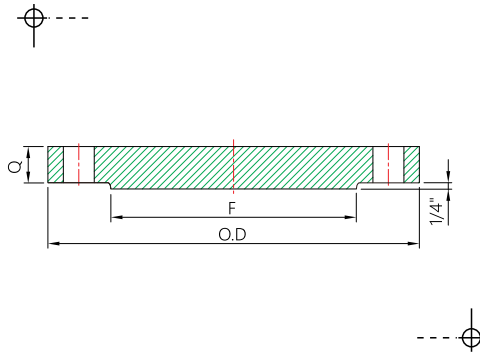
ASTM A182 FLANGES ANSI B16.5

CLASS 1500 STAINLESS STEEL FLANGES ANSI B16.5

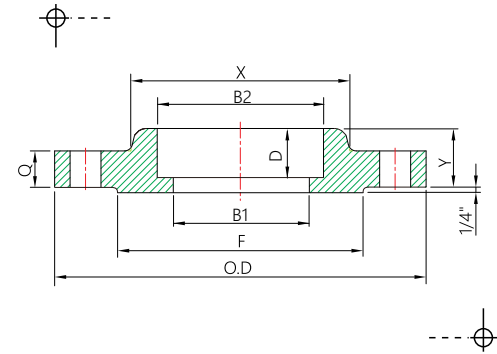
THREADED



BLIND



SOCKET WELD



DIMENSIONS

unit : inch

NOM. PIPE SIZE	MIN. THREAD LENGTH	RADIUS (R) LAP JOINT	DRILLING			BOLTING			
			DIAMETER OF BOLT CIRCLE	NO. OF HOLES	DIA. OF HOLES	DIA. OF BOLTS	STUD BOLT LENGTH		
							.25" Raised Face	Male & Female Tongue & Groove	Ring Joint
1/2	0.88	0.12	3.25	4	0.88	3/4	4.25	4.00	4.25
3/4	1.00	0.12	3.50	4	0.88	3/4	4.50	4.25	4.50
1	1.12	0.12	4.00	4	1.00	7/8	5.00	4.75	5.00
1 1/4	1.19	0.19	4.38	4	1.00	7/8	5.00	4.75	5.00
1 1/2	1.25	0.25	4.88	4	1.12	1	5.50	5.25	5.50
2	1.50	0.31	6.50	8	1.00	7/8	5.75	5.50	5.75
2 1/2	1.88	0.31	7.50	8	1.12	1	6.25	6.00	6.25
3	2.00	0.38	8.00	8	1.25	1 1/8	7.00	6.75	7.00
4	2.25	0.44	9.50	8	1.38	1 1/4	7.75	7.50	7.75
5	2.50	0.44	11.50	8	1.62	1 1/2	9.75	9.50	9.75
6	2.75	0.50	12.50	12	1.50	1 3/8	10.25	10.00	10.50
8	3.00	0.50	15.50	12	1.75	1 5/8	11.50	11.25	12.00
10	3.31	0.50	19.00	12	2.00	1 7/8	13.25	13.00	13.75
12	3.62	0.50	22.50	16	2.12	2	14.75	14.50	15.50
14	—	0.50	25.00	16	2.38	2 1/4	16.00	15.75	17.00
16	—	0.50	27.75	16	2.62	2 1/2	17.50	17.25	18.50
18	—	0.50	30.50	16	2.88	2 3/4	19.50	19.00	20.50
20	—	0.50	32.75	16	3.12	3	21.50	21.00	22.50
24	—	0.50	39.00	16	3.62	3 1/2	24.50	24.00	25.75

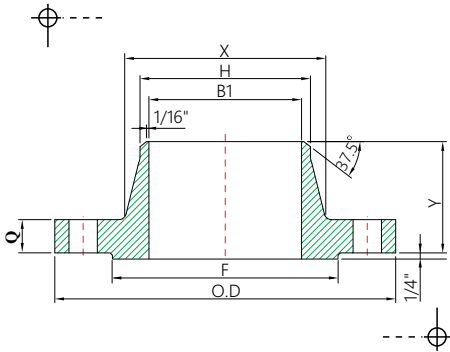
NOM. PIPE SIZE	APPROXIMATE WEIGHT EACH — POUNDS†			
	WELDING NECK	SLIP-ON AND THREADED	LAP JOINT	BLIND
1/2	5	4	4	4
3/4	6	5	5	6
1	9	8	8	8
1 1/4	10	9	9	9
1 1/2	13	12	12	13
2	25	25	25	25
2 1/2	36	36	35	35
3	48	48	47	48
4	73	73	75	73
5	130	130	140	140
6	165	165	170	160
8	275	260	285	300
10	455	435	485	510
12	690	580	630	690
14	940	---	890	975
16	1250	---	1150	1300
18	1625	---	1475	1750
20	2050	---	1775	2225
24	3325	---	2825	3625



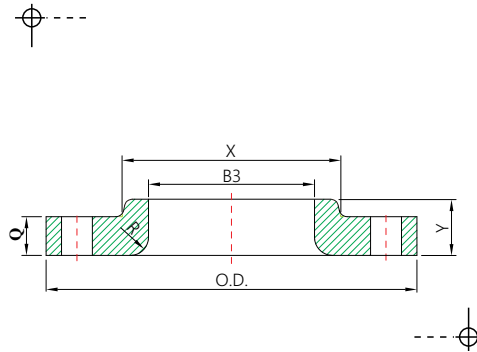
ASTM A182 FLANGES ANSI B16.5

CLASS 2500 STAINLESS STEEL FLANGES ANSI B16.5

WELDING NECK



LAP JOINT



SLIP-ON

**SLIP-ON
IS NOT PRODUCED
IN CLASS 2500**

DIMENSIONS

unit : inch

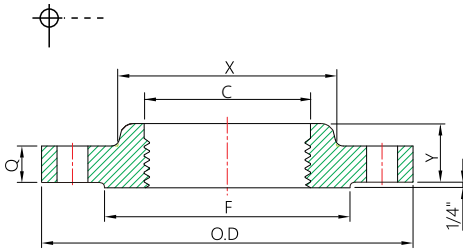
NOM. PIPE SIZE	FLANGE DIAMETER (O.D.)	FLANGE THICKNESS (Q) MIN. (1)	HUB DIA. AT BASE (X)	RAISED FACE DIA. (F)	HUB DIA. AT WELDING POINT (H)	BORE DIAMETER (B)		COUNTER BORE OF THREADED FLANGE (C)	LENGTH THROUGH HUB (Y)		
						(B1) WELDING NECK (2)	(B3) LAP JOINT MIN.		WELDING NECK	SLIP-ON AND THREADED	LAP JOINT
1/2	5.25	1.19	1.69	1.38	0.84	TO BE SPECIFIED BY PURCHASER	0.90	0.93	2.88	1.56	1.56
3/4	5.50	1.25	2.00	1.69	1.05		1.11	1.14	3.12	1.69	1.69
1	6.25	1.38	2.25	2.00	1.32		1.38	1.41	3.50	1.88	1.88
1 1/4	7.25	1.50	2.88	2.50	1.66		1.72	1.75	3.75	2.06	2.06
1 1/2	8.00	1.75	3.12	2.88	1.90		1.97	1.99	4.38	2.38	2.38
2	9.25	2.00	3.75	3.62	2.38		2.46	2.50	5.00	2.75	2.75
2 1/2	10.50	2.25	4.50	4.12	2.88		2.97	3.00	5.62	3.12	3.12
3	12.00	2.62	5.25	5.00	3.50		3.60	3.63	6.62	3.62	3.62
4	14.00	3.00	6.50	6.19	4.50		4.60	4.63	7.50	4.25	4.25
5	16.50	3.62	8.00	7.31	5.56		5.69	5.69	9.00	5.12	5.12
6	19.00	4.25	9.25	8.50	6.63		6.75	6.75	10.75	6.00	6.00
8	21.75	5.00	12.00	10.62	8.63		8.75	8.75	12.50	7.00	7.00
10	26.50	6.50	14.75	12.75	10.75		10.92	10.88	16.50	9.00	9.00
12	30.00	7.25	17.38	15.00	12.75		12.92	12.94	18.25	10.00	10.00



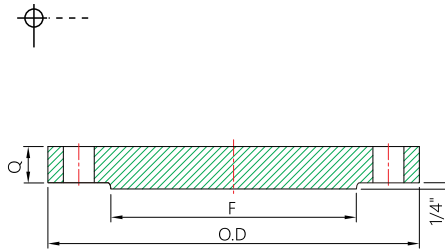
ASTM A182 FLANGES ANSI B16.5

CLASS 2500 STAINLESS STEEL FLANGES ANSI B16.5

THREADED



BLIND



SOCKET WELD

**SOCKET WELD
IS NOT PRODUCED
IN CLASS 2500**

DIMENSIONS

unit : inch

NOM. PIPE SIZE	MIN. THREAD LENGTH	RADIUS (R) LAP JOINT	DRILLING			BOLTING			
			DIAMETER OF BOLT CIRCLE	NO. OF HOLES	DIA. OF HOLES	DIA. OF BOLTS	STUD BOLT LENGTH		
							.25" Raised Face	Male & Female Tongue & Groove	Ring Joint
1/2	1.12	0.12	3.50	4	0.88	3/4	5.25	5.00	5.25
3/4	1.25	0.12	3.75	4	0.88	3/4	5.25	5.00	5.25
1	1.38	0.12	4.25	4	1.00	7/8	5.75	5.50	5.75
1 1/4	1.50	0.19	5.12	4	1.12	1	6.25	6.00	6.50
1 1/2	1.75	0.25	5.75	4	1.25	1 1/8	7.00	6.75	7.25
2	2.00	0.31	6.75	8	1.12	1	7.25	7.00	7.50
2 1/2	2.25	0.31	7.75	8	1.25	1 1/8	8.00	7.75	8.25
3	2.50	0.38	9.00	8	1.38	1 1/4	9.00	8.75	9.25
4	2.75	0.44	10.75	8	1.62	1 1/2	10.25	10.00	10.75
5	3.00	0.44	12.75	8	1.88	1 3/4	12.00	11.75	12.75
6	3.25	0.50	14.50	8	2.12	2	13.75	13.50	14.50
8	3.75	0.50	17.25	12	2.12	2	15.25	15.00	16.00
10	4.25	0.50	21.25	12	2.62	2 1/2	19.50	19.25	20.50
12	4.75	0.50	24.38	12	2.88	2 3/4	21.50	21.25	22.50

NOM. PIPE SIZE	APPROXIMATE WEIGHT EACH — POUNDS‡			
	WELDING NECK	SLIP-ON AND THREADED	LAP JOINT	BLIND
1/2	7	7	7	7
3/4	8	8	8	8
1	12	11	11	11
1 1/4	17	16	16	17
1 1/2	25	22	22	23
2	42	38	37	39
2 1/2	52	55	53	56
3	94	83	80	86
4	145	125	120	135
5	245	210	205	225
6	380	325	315	345
8	580	485	470	530
10	1075	930	900	1025
12	1525	1100	1100	1300

